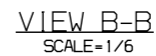
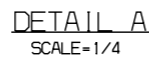



鋼材 材料	mm	40	2	4
		30	2	3
		10	1	1.5
		3	0.5	1
		2150	-	7
		1600	4	5
		800	3	4
		400	2	3
		200	1.5	2
		100	1	1.5
鋼材 材料				
CASTING (±)				
20M	8	14	24	
15M	7	12	21	
12M	6	10	18	
8M	5	8	14	
4M	4	6	11	
2M	3	4	8	
1M	2	3	6	
315	1	2	4	
120	1	2	3	
30	1	1	1	
鋼材 材料				
WELDING (±)				
20M	-	6.0	8.0	
15M	-	5.0	7.0	
12M	-	3.0	5.0	
8M	0.8	2.0	4.0	
4M	0.5	1.2	3.0	
2M	0.3	0.8	2.0	
315	0.2	0.5	1.2	
120	0.15	0.3	0.8	
30	0.1	0.2	0.5	
3-6	0.05	0.1	0.2	
鋼材 材料				
MCROSLING (±)				
鋼材材料 鋼材材料 鋼材材料				
GENERAL TOLERANCE				



2	R506069-1005	SCREW, 0. H	SUS304	16		M4x20	
1	RFP65007TAN0	HAND_RAIL	ASSY	4			
품 NO.	부 품 PART NO.	品 DESCRIPTION	재 질 MATERIAL	수 량 Q'TY	중 량 W.T	비 고 REMARKS	
승인 APP	JeongYui Lee 2014. 10. 02	재질 MAT'L ASSY	INSTALLATION, HAND_RAIL, T CAR				
검도 CHK	KeongBong Park 2014. 10. 02	중량 G.W					
설계 DGN	HeonUk Lee 2014. 10. 02	도면 번호 DRG. NO	MS	RFP65003EJO		Ver. 00	RS01402
제도 DRG	HeeSook Jeong 2014. 10. 02	단 位 B B	SCALE 1/4	장 수 SHEET 1	of 1	Rev. --	RFP-
		SIZE A1	HYUNDAI Rotem 현대로템주식회사				
 22222 REF. NO.	22222 REF. NO.						